

# Planetary Centrifugal Mixer (Vacuum type)

## SMIDA MIXER TMV-2000TT



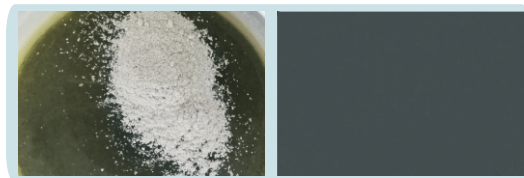
### Introduction :

- ▶ Rotation/Revolution while working with high power vacuum pump, equipment can mixing the material evenly in few seconds or few minutes, mixing and deaeration complete at the same time.
- ▶ Rotation/revolution speed can be independently controlled , It is designed for some very difficult to stir evenly.
- ▶ Mixing capacity varies from a few grams up to 2000grams by using different jars, meet the requirement from laboratory research to mass production.
- ▶ Up to 10 preset programs(Can be customized), every program can be divided to 5 segment, each segment with different mixing time and speed, able to deal with different types of the materials.
- ▶ Max rotation speed is 2500rpm, high viscosity material can be mixed evenly .
- ▶ The key parts are all from industrial famous brands from home and abroad, to guarantee the stability of equipment under long time and high load operation
- ▶ Partial function can be modified according to customer's request.

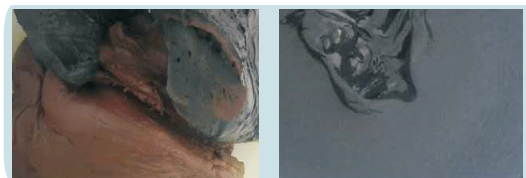
### TMV-2000TT Effects of mixing:



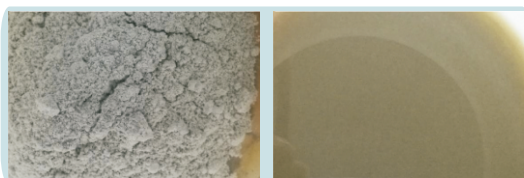
LED silicon+phosphor+diffused powder



Epoxy resin+ nano material



Experimental Clay



Epoxy resin+Glass fiber material

### SHENZHEN SMIDA INTELLIGENT EQUIPMENT CO., LTD.

Tel : 0755-27858540(Shenzhen Headquarters) 0512-66838308(Suzhou office)

Fax : 0755-27856125-615 E-mail : zhouchun@smida.com.cn

Add : 12th Floor, Building B, Quanju Industrial Park, Pinggang, Jiangshi Road, Gongming Street, Guangming New District, Shenzhen, China

Room 401, Building 26, Phoenix City, 288 Changjiang North Road, Kunshan City, Suzhou

Web : www.smida.com.cn(official website) www.smidahk.com.cn(Alibaba)



WeChat

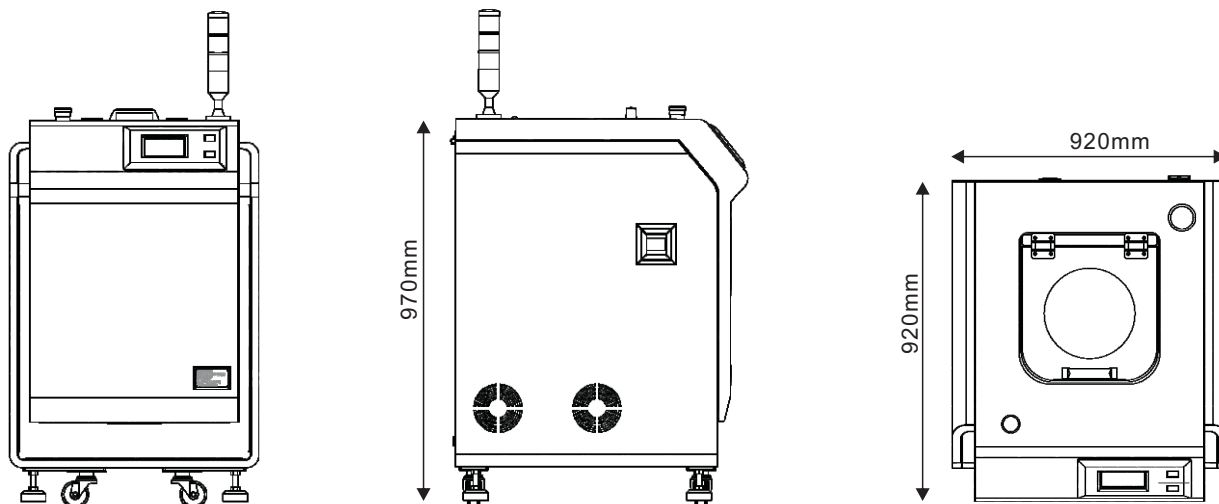


Web


# Planetary Centrifugal Mixer (Vacuum type)

## SMIDA MIXER TMV-2000TT

### TMV-2000TT Dimensions:



### TMV-2000TT Specifications:

Model	TMV-2000TT	Vacuum measurement method	High precision vacuum sensor	Dimensions	L920*W930*H1000mm
Product Name	Planetary Centrifugal Mixer	Pump capability	21 m <sup>3</sup> /h	Gross Weight	Approx. 220Kg
Mixing Methods	Vacuum/Rotation/Revolution/Non-contact	Vacuum setting range	Air pressure 101Kpa-0.2Kpa	Safety device	Lock sensor,vibration sensor,emergency button
Continuous operation time	30mins	Revolution speed	0-2500 rpm, speed variable every 10 rotation	Connectors (Optional)	
Memory	20 groups program	Rotation speed	0-2500 rpm, rotation/revolution ratio is fixed		
Max. mix volume (G. W)	2000ml,1000g*2 Based on density 1.0	Supply voltage	AC220V,50Hz-60Hz 2.5KW		
Mixing program	Each program can set 5 segment with different speed and vacuum level	Working condition	10-35 °C 35-80%RH (No condensation)		

#### Warm prompt:

- The appearance and specifications are subject to change without prior notice.
- This machine is not explosion-proof specifications, please don't mix dangerous or harmful substances to human body.

### SHENZHEN SMIDA INTELLIGENT EQUIPMENT CO., LTD.

Tel : 0755-27858540(Shenzhen Headquarters) 0512-66838308(Suzhou office)

Fax : 0755-27856125-615 E-mail : zhouchun@smida.com.cn

Add : 12th Floor, Building B, Quanju Industrial Park, Pinggang, Jiangshi Road, Gongming Street, Guangming District, Shenzhen, China

Room 401, Building 26, Phoenix City, 288 Changjiang North Road, Kunshan City, Suzhou

Web : www.smida.com.cn(official website) www.smidahk.com.cn(Alibaba)



WeChat



Web